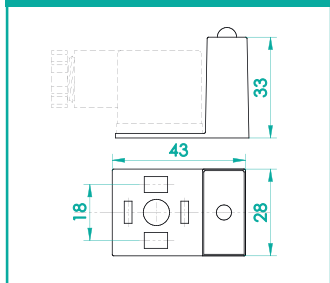


**Angolato passo 18mm**  
Angled, spacing 18mm  
Abgewinkelt, Abstand 18mm

**Forma A**  
Shape A  
Form A

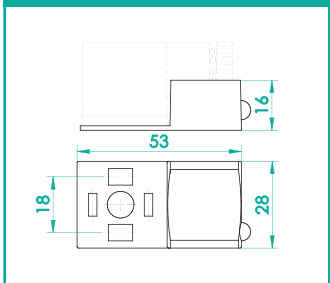
**13182A00\*\***



**Diritto passo 18mm**  
Straight, spacing 18mm  
Gerade, Abstand 18mm

**Forma A**  
Shape A  
Form A

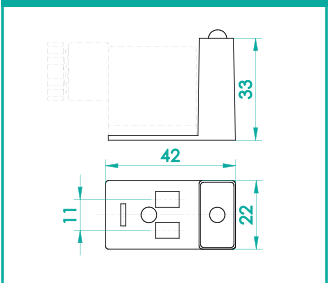
**13182D00\*\***



**Angolato passo 11mm terra H6**  
Angled, spacing 11mm ground h6  
Abgewinkelt, Abstand 11mm, Erdung h6

**Forma B**  
Shape B  
Form B

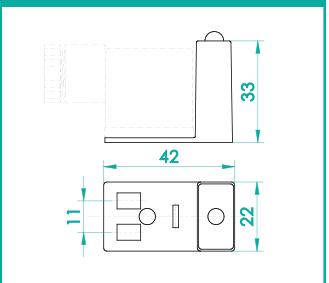
**13112A06\*\***



**Angolato passo 11mm terra H12**  
Angled, spacing 11mm ground h12  
Abgewinkelt, Abstand 11mm, Erdung h12

**Forma B**  
Shape B  
Form B

**13112A12\*\***



**Diritto passo 11mm terra H6**  
Straight, spacing 11mm ground h6  
Gerade, Abstand 11mm, Erdung h6

**Forma B**  
Shape B  
Form B

**13112D06\*\***



**Diritto passo 11mm terra H12**  
Straight, spacing 11mm ground h12  
Gerade, Abstand 11mm, Erdung h12

**Forma B**  
Shape B  
Form B

**13112D12\*\***



**Angolato passo 10mm terra H6**  
Angled, spacing 10mm ground h6  
Abgewinkelt, Abstand 10mm, Erdung h6

**Forma B**  
Shape B  
Form B

**13102A06\*\***



**Angolato passo 10mm terra H12**  
Angled, spacing 10mm ground h12  
Abgewinkelt, Abstand 10mm, Erdung h12

**Forma B**  
Shape B  
Form B

**13102A12\*\***



**Diritto passo 10mm terra H6**  
Straight, spacing 10mm ground h6  
Gerade, Abstand 10mm, Erdung h6

**Forma B**  
Shape B  
Form B

**13102D06\*\***



**Diritto passo 10mm terra H12**  
Straight, spacing 10mm ground h12  
Gerade, Abstand 10mm, Erdung h12

**Forma B**  
Shape B  
Form B

**13102D12\*\***



**Angolato passo 8mm**  
Angled, spacing 8mm  
Abgewinkelt, Abstand 8mm

**Forma C**  
Shape C  
Form C

**13082A00\*\***



**Angolato passo 9.4mm**  
Angled, spacing 9.4mm  
Abgewinkelt, Abstand 9.4mm

**Forma C**  
Shape C  
Form C

**13942A00\*\***



**FILTRI ANTIDISTURBO**

Surge suppressors/Entstörglieder

**FAMIGLIA FILTRI**

Group of surge suppressors/Gruppe Entstörglieder

**PASSO CONTATTI** Spacing contacts/Abstand kontakte:  
FORMA A= 18    FORMA B IND.= 11    FORMA B ISO.= 10  
FORMA C PASSO 8= 08    PASSO 9,4= 94

**COLORE LED** LED Colour/LED Farbe:  
GIALLO= Y    ROSSO= R    VERDE= G  
**NON COMPILARE= NO LED**  
Yellow/Gelb    Red/Rot    Green/Grün  
No type/Schreibe nichts

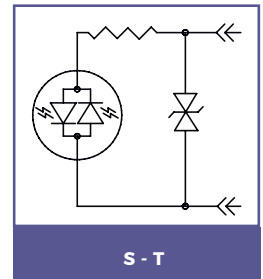
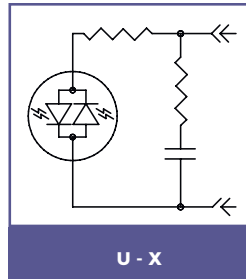
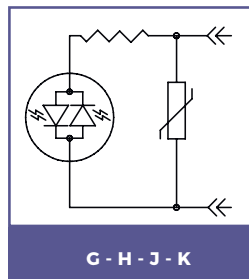
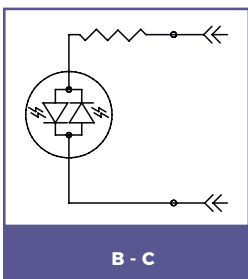
**TERRA H** Traduzione:  
**DOPPIA TERRA H6-H12= 00 (13181308-1394)**  
**TERRA H6= 06    TERRA H12= 12 (1310-311)**  
Double earth positioning/doppelt Erdrichtung

**N° POLI: 2 poli + T= 2**  
Poles/Kontakte

**DIRITTO= D**      **ANGOLATO= A**  
Straight/Direkt Position    Angled/angewinkelten Position



TABELLA CIRCUITI	TENSIONE	CODICE	TYPE
Circuit table /Schaltungstabelle	Voltage/Spannung	Code	
LED bipolare/bipolar LED/zweigpolige LED-Anzeige	10/50V	B	1318 1310 1311 1308 1394 1318 • 1310 • 1311
	70/250V	C	
LED Bipolare+Varistore di protezione contro le sovratensioni /Bipolar LED + Varistore protection against overvoltage/Zweigpolige LED-Anzeige+ Varistorschutz gegen Überspannung	24V	G	
	48V	H	
	110V	J	
	250V	K	
Transil	24V	S	
Transil	110V	T	
LED bipolare/bipolar LED/zweigpolige LED-Anzeige RC = 0,22µF + 150 Ω	10V/50V	U	
	70V/250V	X	



DATI TECNICI/Technical data/Technische Daten	
Corpo fi tro Surge suppressor body Körper Entstörglieder	PA 66 + 30% FV
Tensione Nominale Max voltage Max. Spannung	In base al circuito
Temperatura di funzionamento Working temperature Betriebstemperatur	-25° +90° C

